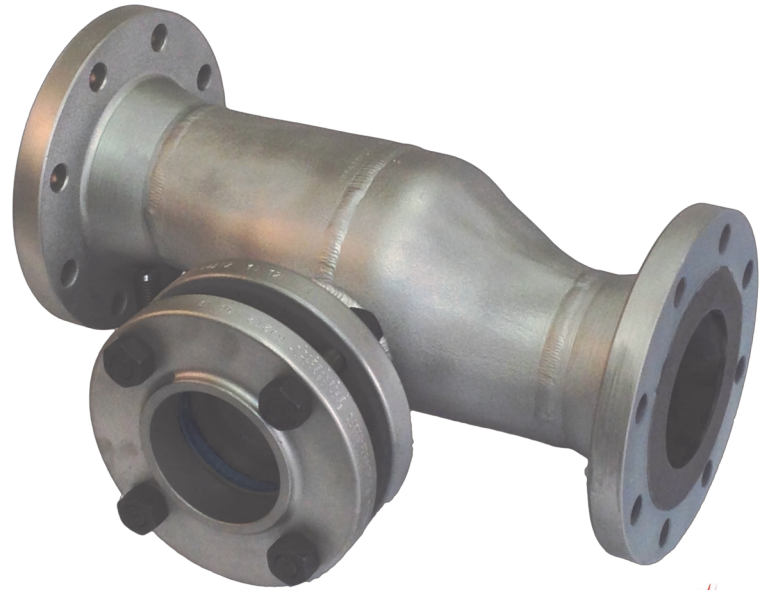


CSI's S_xView™ ensures inherently safe flow confirmation in Sulfur Recovery Unit rundown lines.

BENEFITS

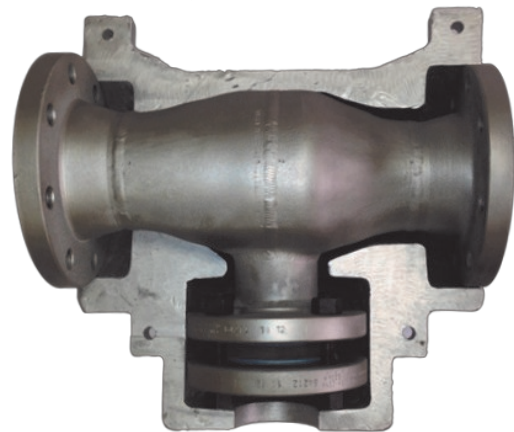
- ◆ **Inherently safe:** Flow confirmation without exposing operator to harmful gases or splashes.
- ◆ **No sight glass fogging:** Sulfur continually contacts sight glass during operation to prevent freezing.
- ◆ **Easy to install:** Low elevation drop requirements.
- ◆ **No flow blockage:** Rod-out capabilities maintained.
- ◆ **Easy to maintain:** No weir to potentially collect debris.



STANDARD FEATURES

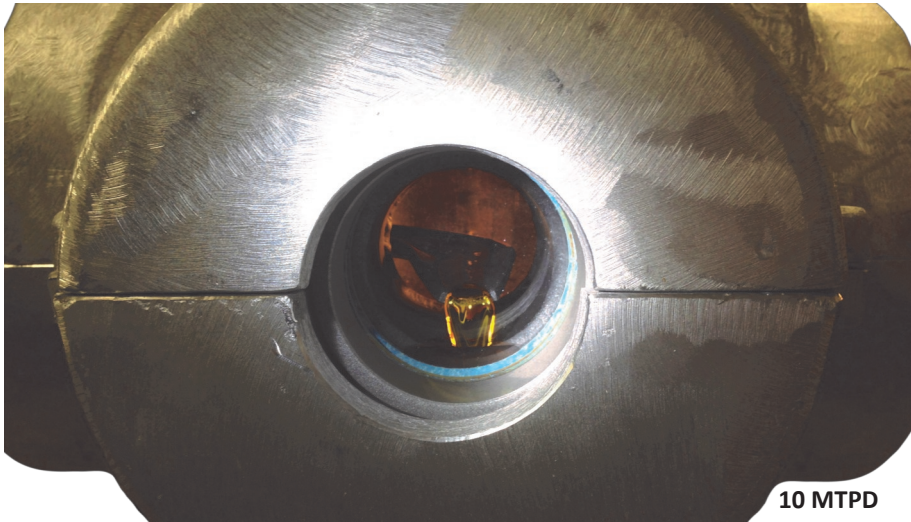
- ◆ Patent-pending design.
- ◆ Small slipstream of flow is diverted to the sight glass, ensuring that the operator can confirm flow even at extremely low flow rates.
- ◆ Carbon Steel material, with 1/2" thick sight glass.
- ◆ Fully jacketed with **CSI ControHeat** bolt on steam jacket.
- ◆ Robust design, with no moving parts or flow blockages.
- ◆ Units available for piping runs with horizontal flow (**Model H**) or vertical flow (**Model V**).
- ◆ Flow sampling option available upon request.

The S_xView™ is backed by CSI's engineering expertise, expansive production capacity, and exemplary customer service. CSI's S_xView™ delivers the technical and commercial value you've come to expect from CSI for over 50 years.

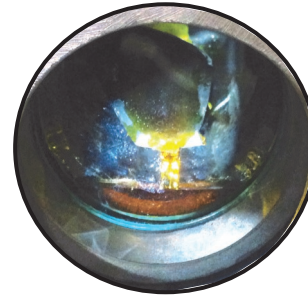


S_xView™ Model H shown with lower half of ControHeat Jacket.

S_xVIEW OPERATING WITH LIQUID SULFUR



EXAMPLE FLOW RATES



3 MTPD

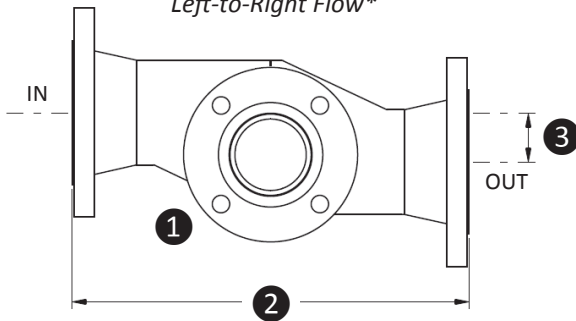


30 MTPD

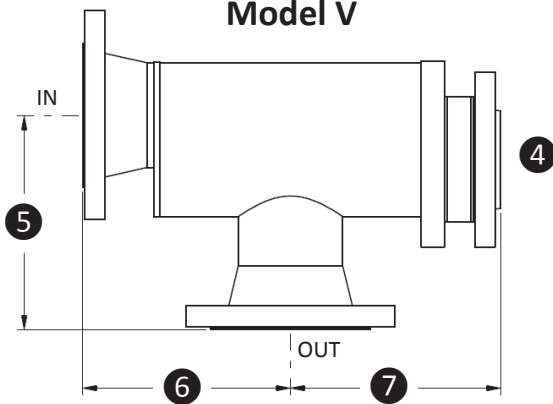
STANDARD UNIT DESIGN

Model H

Left-to-Right Flow*



Model V



NO SPLASHING!

NO VAPOR EXPOSURE!

NO SIGHT GLASS FOGGING!

SPECIFICATIONS

Core Pipe Size:	3" NPS	4" NPS	6" NPS
Horizontal Unit			
① Sight Port Size	3"	3"	3"
② Face to Face	12 1/2"	14"	18"
③ Height Drop	1"	2"	1 7/8"
Vertical Unit			
④ Sight Port Size	3"	3"	3"
⑤ Vertical Drop	7 1/8"	9 1/8"	11 1/8"
⑥ Horizontal Run	7 1/8"	8 7/8"	10 3/4"
⑦ Take-out	7 1/2"	9"	10 3/8"

*Units also available for processes flowing right-to-left.