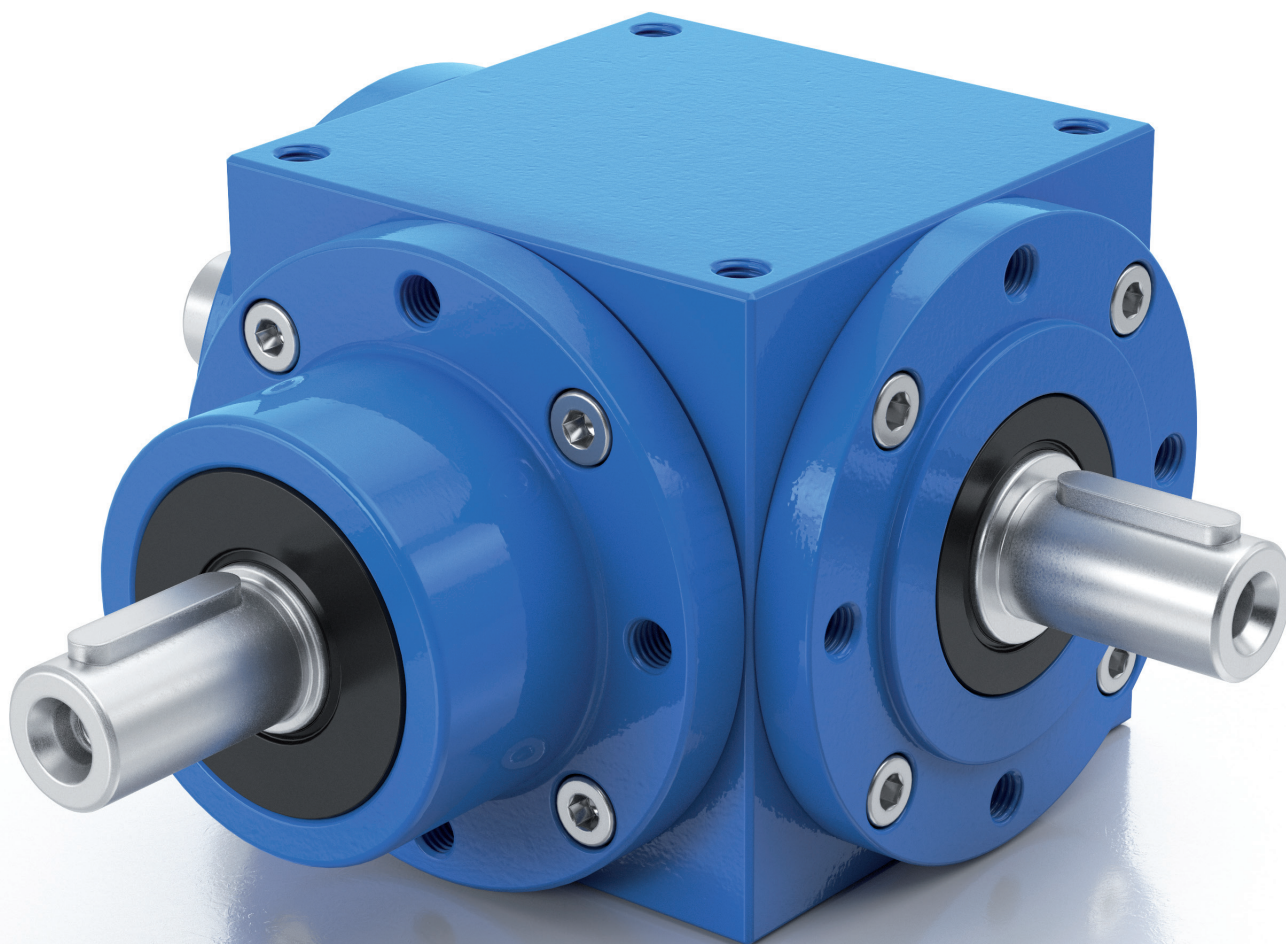
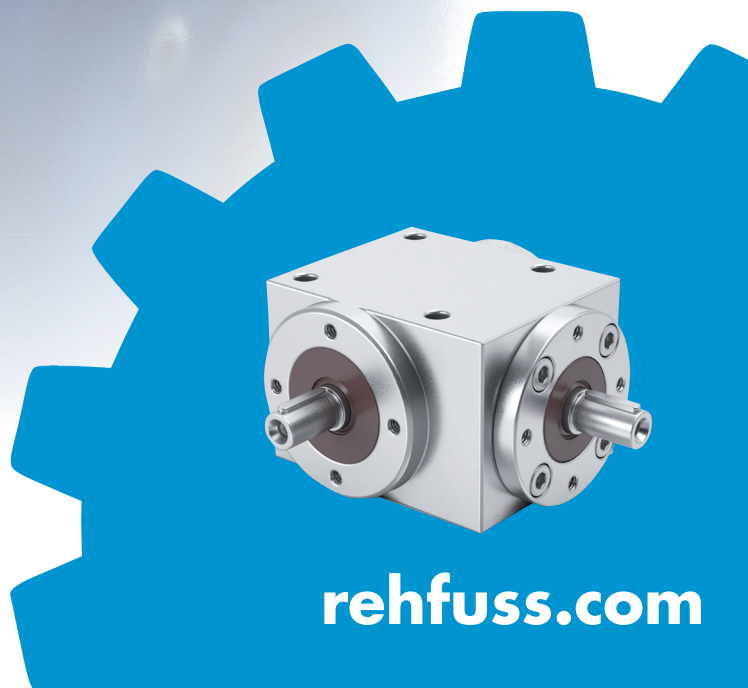




BEVEL GEAR UNITS



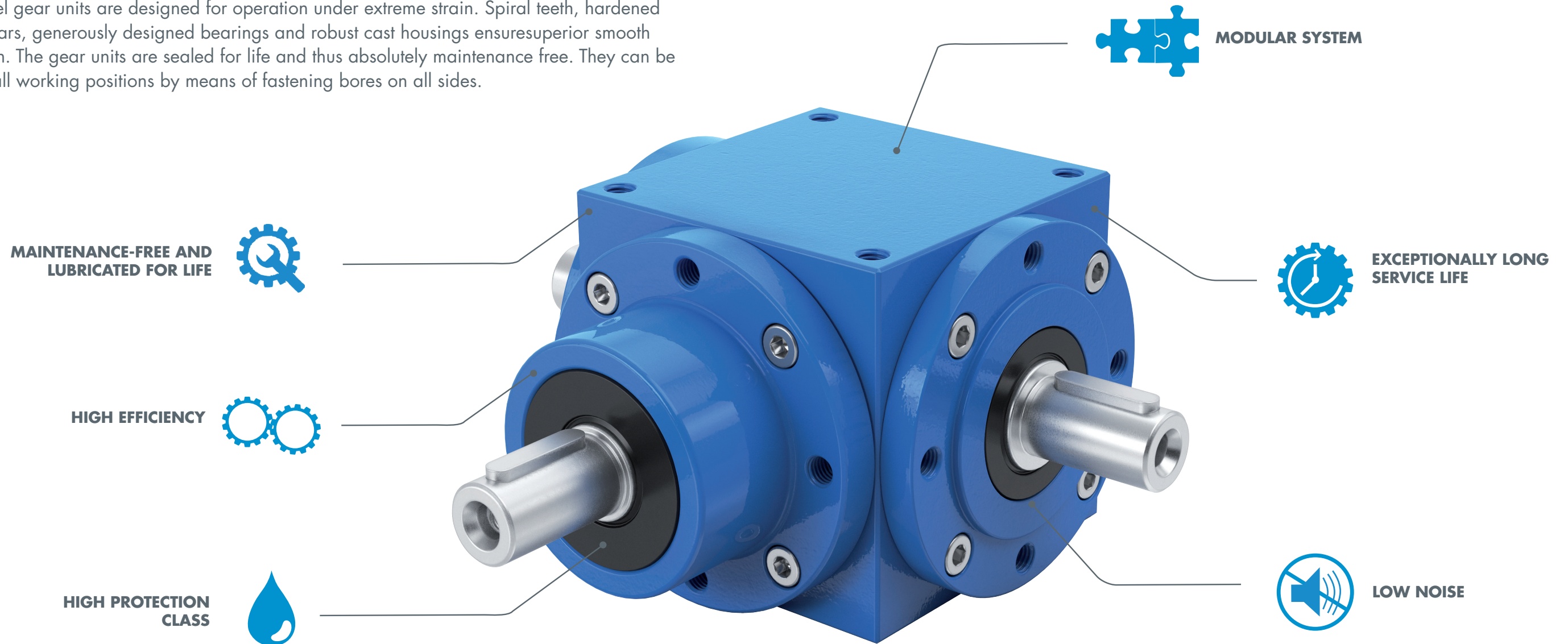
**success based on
quality and reliability**



rehfuss.com

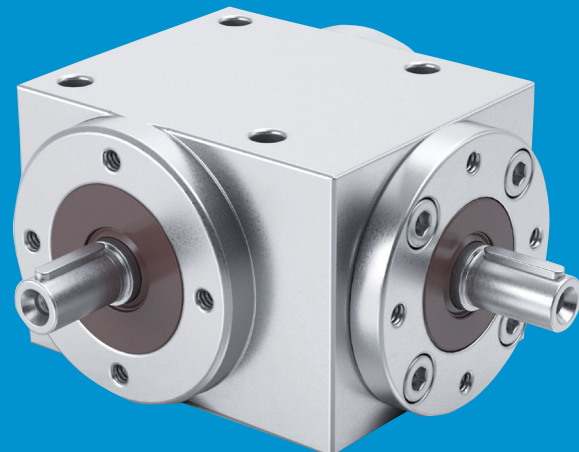
MAINTENANCE-FREE THROUGH LIFE LUBRICATION

Our Bevel gear units are designed for operation under extreme strain. Spiral teeth, hardened bevel gears, generously designed bearings and robust cast housings ensures superior smooth operation. The gear units are sealed for life and thus absolutely maintenance free. They can be used in all working positions by means of fastening bores on all sides.



EXECUTION:

- Stainless steel
- Very easy to clean
- Especially for applications in the hygiene area
- Combined with our Smooth Body Motor
- Areas of application are in the food, beverage and pharmaceutical industries



CHARACTERISTICS:

- Optimised size/performance ratio
- Designed for continuous operation under rough conditions
- Sealed for life (lifetime lubrication)
- Housing produced from high quality grey cast iron with rugged walls
- Mathematically exact gear ratios
- Space efficient angular drive
- Even small models are able to transmit high torques
- Various mounting positions
- Various designs

Options:

- Corrosion resistant design
- Low backlash version available (for example for servo models)
- Motor adaptor
- Shrink disc design
- Output on various sides
- Various fixing sides
- Special version possible for use in food technology

Performance data

Character	Value	Unit
Torque range	10 - 1,750	Nm
Ratio range	1,000 - 6,000	i

Areas of application

- Automation
- Transfer case
- Packaging machines
- Linear technique
- Machine and plant construction
- Environmental engineering

